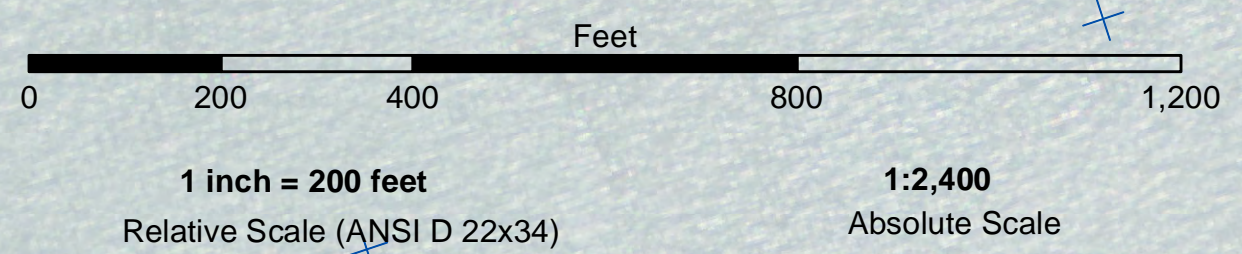


NAD 83  
CENTERLINE ANGLE POINTS

PT	X	Y
C1	6021958.65	2103914.82
C2	6020630.00	2101066.50
C3	6020354.08	2100223.06
C4	6021030.11	2098794.95
C5	6022016.50	2097553.00
C6	6023710.78	2096749.92

NAD 83  
CHANNEL ANGLE POINTS

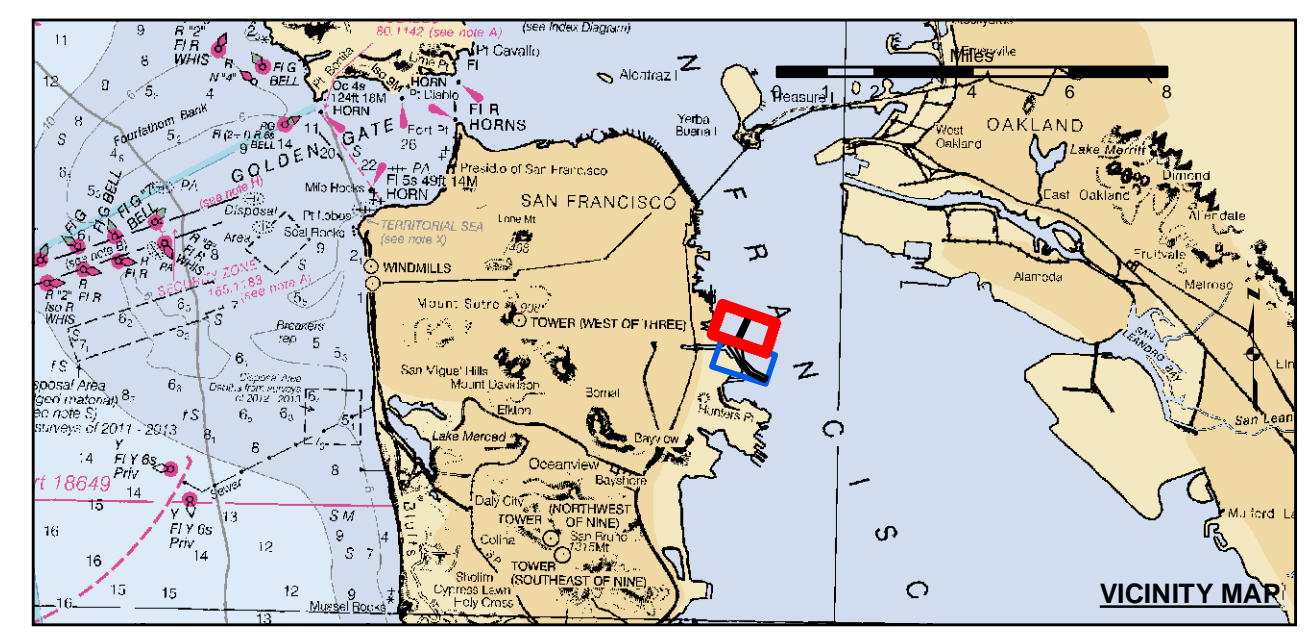
PT	X	Y
01	6021730.30	2104021.63
02	6020315.00	2100996.00
03	6019609.66	2100404.62
04	6021657.00	2097397.00
05	6023590.57	2096492.83
06	6023831.00	2097007.00
07	6022376.00	2097709.00
08	6021252.00	2098946.00
09	6020945.00	2101137.00
10	6022187.00	2103808.00



**US Army Corps of Engineers**  
San Francisco District  
1455 Market Street  
San Francisco, CA 94103

**DISCLAIMER**  
The United States Government furnishes this information as a public service. It is not intended to be used for any purpose other than the intended purpose. The user is responsible for the results of any application of the data for other than the intended purpose. The United States Government makes no warranty, expressed or implied, concerning the accuracy, completeness, or reliability of the information furnished. The United States Government assumes no liability whatsoever to any person by reason of any use made thereof. These data belong to the Government. Therefore the recipient may not transfer these data to others without also transferring this disclaimer.

Prepared Under the Direction of	Chart Date:
KEVIN P. ARNETT	Aug 30, 2021
LT Colonel, C.E., District Engineer	Designed by:
Hydro Survey Team Leader	PDT
Recommended by:	Checked by:
Chief, Hydro Survey Section	PDT
Approved by:	Drawn by:
Chief, Construction Branch	PDT



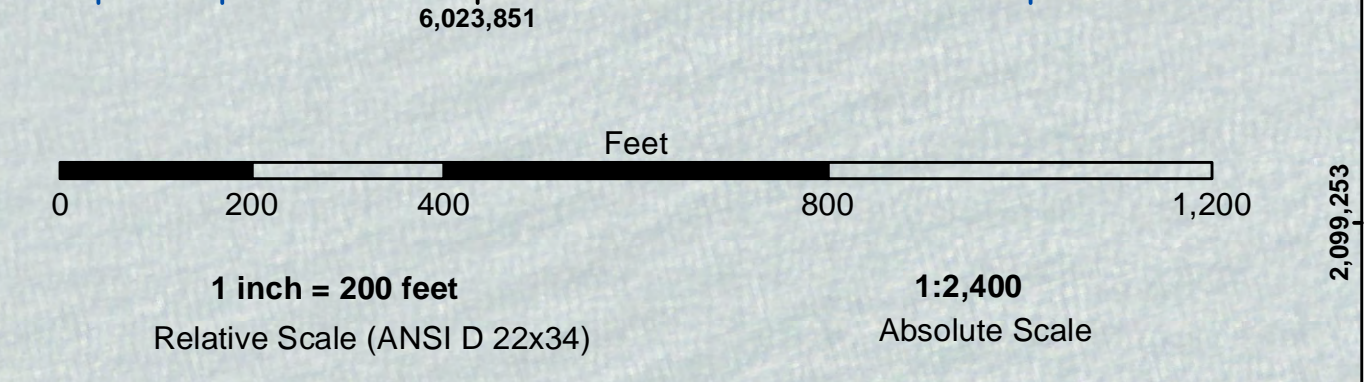
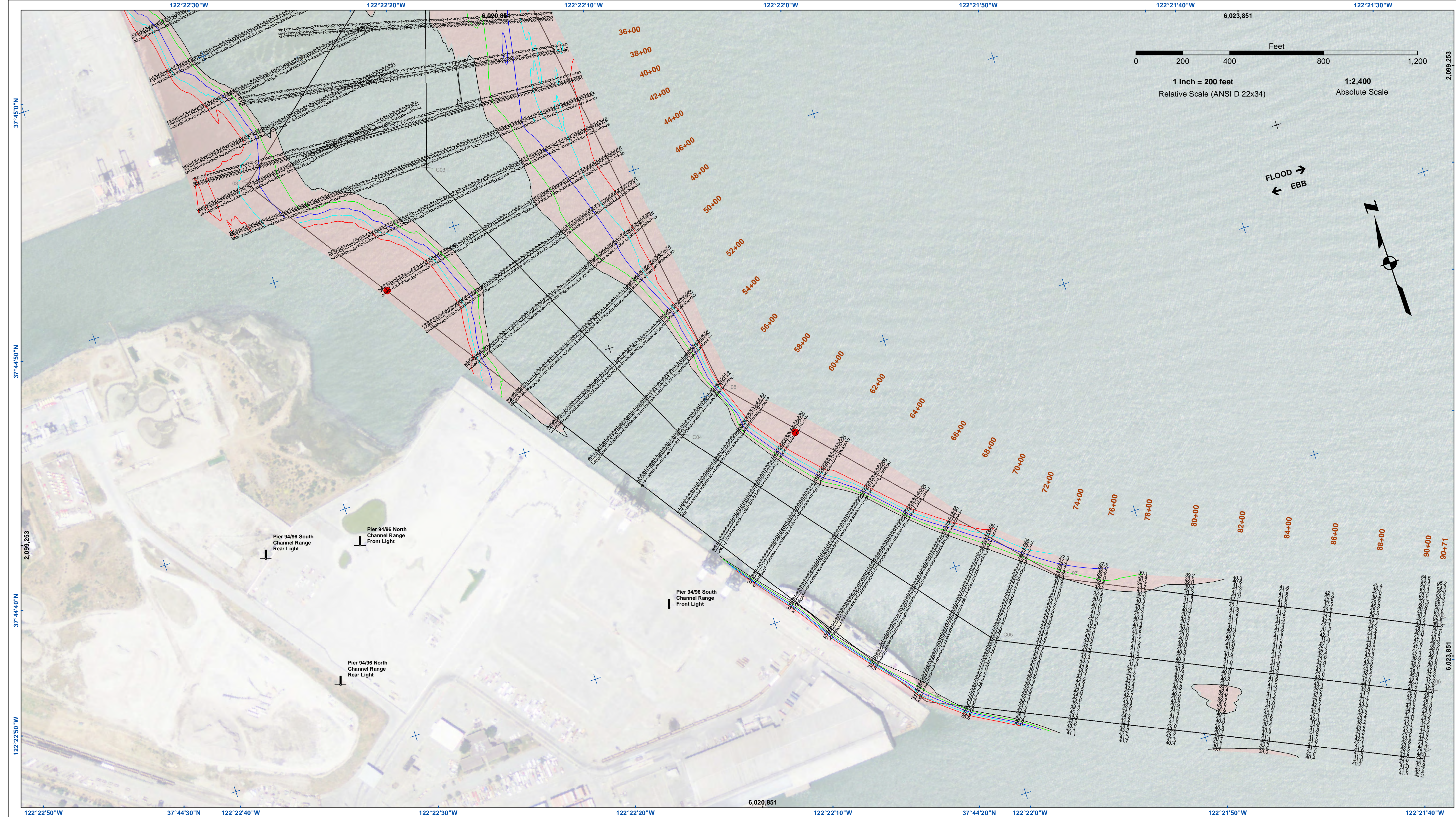
- Federal Navigation Channel
- Shoaling Area
- Placement Area
- Anchorage Area
- Wreck Area
- Submerged Wreck
- Angle Point
- Beacon, General
- Obstruction Point
- Navigation Buoy
- Navigation Buoy
- Shoalest Sounding\*
- Contours**
- 40
- 39
- 38
- 37
- 36

**NOTES:**  
HORIZONTAL COORDINATE SYSTEM:  
THE LOCATION OF ALL NAVIGATION AIDS ARE BASED ON NORTH AMERICAN DATUM OF 1983 (NAD83), PROJECTED TO THE STATE PLANE COORDINATE SYSTEM (SPCS), CALIFORNIA ZONE III. DISTANCE UNITS IN U.S. SURVEY FEET.  
VERTICAL DATUM:  
SOUNDINGS ARE SHOWN IN FEET AND INDICATE DEPTHS BELOW MEAN LOWER LOW WATER. SOUNDINGS WERE TAKEN BY FATHOMETER AND ARE SHOWN TO THE NEAREST TENTH OF A FOOT. SOUNDINGS ARE BASED ON THE DATUM OF MEAN LOWER LOW WATER AT THE LOCALITY. BASE MAPS ARE USDA NAIP 2010.  
THE INFORMATION DEPICTED ON THIS MAP REPRESENTS THE RESULTS OF A SURVEY CONDUCTED ON THE DATE INDICATED AND CAN ONLY BE CONSIDERED TO REPRESENT THE GENERAL CONDITION EXISTING AT THAT TIME.  
PLANE GRID, BEARING AND COORDINATES ARE BASED ON THE STATE OF CALIFORNIA COORDINATE SYSTEM, LAMBERT CONFORMAL PROJECTION, ZONE III NAD 83, CALIFORNIA, AS DESCRIBED IN SPECIAL PUBLICATION NO. 253, PUBLISHED BY NATIONAL OCEAN SURVEY.  
\*SHOALEST SOUNDING PER QUARTER PER REACH

DRAWING NOT TO BE USED FOR NAVIGATION. ONLY CHANNEL CONDITION AT DATE OF SURVEY. INFORMATION PROVIDED BY THE U.S. COAST GUARD. BUOY LOCATIONS REPRESENT THE POSITION OF THE SINKER ONLY.  
SURVEYED BY THE CORPS OF ENGINEERS.  
SOUNDINGS WERE TAKEN BY FATHOMETER AND ARE SHOWN TO THE NEAREST TENTH OF A FOOT. SOUNDINGS ARE BASED ON THE DATUM OF MEAN LOWER LOW WATER AT THE LOCALITY. BASE MAPS ARE USDA NAIP 2010.  
THE PROJECT DEPTH IS 40 FEET AT M.L.L.W. SOUNDINGS ARE BASED ON THE TIDE GAUGE LOCATED AT THE HYDE STREET PIER, SAN FRANCISCO, CALIFORNIA.  
VERTICAL CONTROL:  
BM 4 1941  
PID: HT0616  
MLLW = 4.796M (15.735 FT)  
NOAA STATION 941 4358  
TIDE GAUGE LOCATION: ISLAIS CREEK, PIER 80  
HORIZONTAL CONTROL:  
COAST GUARD DGPS BEACON

SAN FRANCISCO BAY  
CALIFORNIA  
**ISLAIS CREEK**  
CONDITION SURVEY  
27 AUGUST 2021

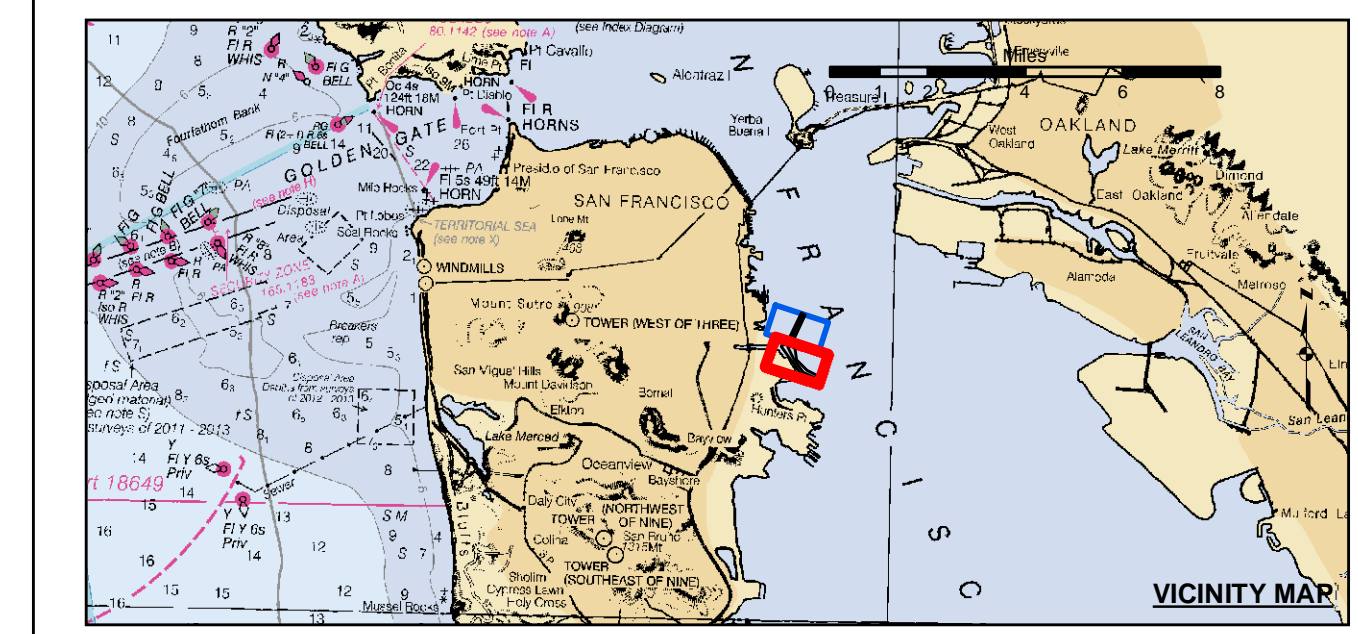
**Sheet Reference Number**  
1 of 2



**US Army Corps of Engineers**  
 San Francisco District  
 1455 Market Street  
 San Francisco, CA 94103

**DISCLAIMER**  
 The United States Government furnishes this information as a public service. It is not intended to be used for any purpose other than that for which it was prepared. The user assumes all responsibility for the results of any application of the data for other than the intended purpose. The United States Government makes no warranty, expressed or implied, concerning the accuracy, completeness, or reliability of the information furnished. The United States Government is not liable for any damage or loss, including consequential damages, arising from the use of the information furnished. These data belong to the Government. Therefore, the user may not transfer these data to others without also transferring this disclaimer.

Chart Date:	Aug 30, 2021
Surveyed By:	LT COLONEL C.E. DISTRICT ENGINEER
Plotted By:	PDT
Designed by:	PDT
Checked By:	PDT
Drawn by:	PDT



Federal Navigation Channel	Beacon, General	<b>Contours</b>
Shoaling Area	Obstruction Point	
Placement Area	Navigation Buoy	
Anchorage Area	Navigation Buoy	
Wreck Area	Shoalest Sounding*	
Submerged Wreck		-40
Angle Point		-39
		-38
		-37
		-36

**NOTES:**  
 HORIZONTAL COORDINATE SYSTEM:  
 THE LOCATION OF ALL NAVIGATION AIDS ARE BASED ON NORTH AMERICAN DATUM OF 1983 (NAD83), PROJECTED TO THE STATE PLANE COORDINATE SYSTEM (SPCS), CALIFORNIA ZONE III. DISTANCE UNITS IN U.S. SURVEY FEET.  
 VERTICAL DATUM:  
 SOUNDINGS ARE SHOWN IN FEET AND INDICATE DEPTHS BELOW MEAN LOWER LOW WATER. SOUNDINGS WERE TAKEN BY FATHOMETER AND ARE SHOWN TO THE NEAREST TENTH OF A FOOT. SOUNDINGS ARE BASED ON THE DATUM OF MEAN LOWER LOW WATER AT THE LOCALITY. BASE MAPS ARE USDA NAIP 2010.  
 THE INFORMATION DEPICTED ON THIS MAP REPRESENTS THE RESULTS OF A SURVEY CONDUCTED ON THE DATE INDICATED AND CAN ONLY BE CONSIDERED TO REPRESENT THE GENERAL CONDITION EXISTING AT THAT TIME.  
 PLANE GRID, BEARING AND COORDINATES ARE BASED ON THE STATE OF CALIFORNIA COORDINATE SYSTEM, LAMBERT CONFORMAL PROJECTION, ZONE III NAD 83, CALIFORNIA, AS DESCRIBED IN SPECIAL PUBLICATION NO. 253, PUBLISHED BY NATIONAL OCEAN SURVEY.  
 \*SHOALEST SOUNDING PER QUARTER PER REACH

DRAWING NOT TO BE USED FOR NAVIGATION. ONLY CHANNEL CONDITION AT DATE OF SURVEY.  
 THE LOCATION OF ALL NAVIGATION AIDS ARE BASED ON INFORMATION PROVIDED BY THE U.S. COAST GUARD. BUOY LOCATIONS REPRESENT THE POSITION OF THE SINKER ONLY.  
 SURVEYED BY THE CORPS OF ENGINEERS.  
 SOUNDINGS WERE TAKEN BY FATHOMETER AND ARE SHOWN TO THE NEAREST TENTH OF A FOOT. SOUNDINGS ARE BASED ON THE DATUM OF MEAN LOWER LOW WATER AT THE LOCALITY. BASE MAPS ARE USDA NAIP 2010.  
 THE PROJECT DEPTH IS 40 FEET AT M.L.L.W. SOUNDINGS ARE BASED ON THE TIDE GAUGE LOCATED AT THE HYDE STREET PIER, SAN FRANCISCO, CALIFORNIA.  
 VERTICAL CONTROL:  
 BM 4 19411  
 PID: HT0616  
 MLLW = 4.796M (15.735 FT)  
 NOAA STATION 941 4358  
 TIDE GAUGE LOCATION: ISLAIS CREEK, PIER 80  
 HORIZONTAL CONTROL:  
 COAST GUARD DGPS BEACON

CALIFORNIA  
**ISLAIS CREEK**  
 CONDITION SURVEY  
 27 AUGUST 2021

**Sheet Reference Number**  
 2 of 2